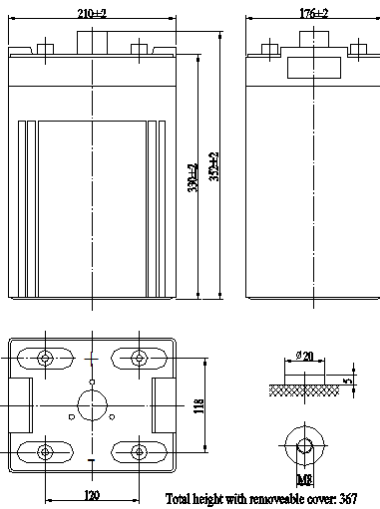


## SL24000

(2V400Ah/10hr)



The rechargeable batteries are lead-lead dioxide systems. The dilute sulfuric acid electrolyte is absorbed by separators and plates and thus immobilized. Should the battery be accidentally overcharged producing hydrogen and oxygen, special one-way valves allow the gases to escape thus avoiding excessive pressure build-up. Otherwise, the battery is

### General Features

- Sealed and maintenance free operation.
- Non-Spillable construction design.
- ABS containers and covers(UL94HB, UL94V-0) optional.
- Safety valve installation for explosion proof .
- High quality and high reliability.
- Exceptional deep discharge recovery performance.
- Low self discharge characteristic.
- Flexibility design for multiple install positions.

### Application

- Alarm System
- Cable Television
- Power tools
- Emergency Power System
- Security System
- Medical Equipment
- UPS
- Communication Equipment
- Control Equipment
- Toys

### CONSTRUCTION

Component	Positive plate	Negative plate	Container	Cover	Safety valve	Terminal	Separator	Electrolyte
Raw material	Lead dioxide	Lead	ABS	ABS	Rubber	Copper	Fiberglass	Sulfuric acid

### TECHNOLOGY PARAMETER

Battery model	SL24000			
Designed Floating Life	15 Years			
Capacity (25°C)	10hR(40A, 1.8V)	5hR(72A, 1.75V)		1hR(247A, 9.60V)
	400Ah	360Ah		247Ah
Dimensions	Length	Width	Height	Total Height
	210±2mm	176±2mm	330±2mm	367±2mm
Approx. weight (±5%)	26Kg			
Internal resistance	Full charged at 25°C: 0.56mOhms			
Self discharge	3% of capacity declined per month at 25°C (average)			
Capacity Affected by Temp.(10HR)	40 °C	25 °C	0 °C	-15 °C
	102%	100%	85%	65%
Charge Voltage (25°C)	Cycle use		Float use	
	2.35-2.45V(-5mV/°C), max. Current: 80A		2.25-2.30V(-3.3mV/°C)	

## SL24000(2V400Ah/10hr)

Constant current discharge ratings-amperes at 25°C

End Point Volts/Cell	15min	30min	1h	2h	3h	4h	5h	8h	10h
1.60V	587	427	247	147	114	91.3	77.7	51.7	43.0
1.65V	559	408	238	142	110	88.7	75.9	50.8	42.4
1.70V	530	388	229	137	106	86.0	74.0	49.8	41.7
1.75V	500	368	219	131	102	83.3	72.0	48.7	40.9
1.80V	470	347	208	126	98.0	80.1	69.4	47.4	40.0

Constant power discharge ratings-watts at 25°C

End Point Volts/Cell	15min	30min	1h	2h	3h	4h	5h	8h	10h
1.60V	909	740	493	310	214	168	140	96.6	82.1
1.65V	860	703	471	286	209	165	138	95.2	81.0
1.70V	810	665	449	270	203	161	135	93.5	79.6
1.75V	760	626	425	260	197	156	132	91.6	78.1
1.80V	710	587	401	246	185	148	125	88.9	76.8

