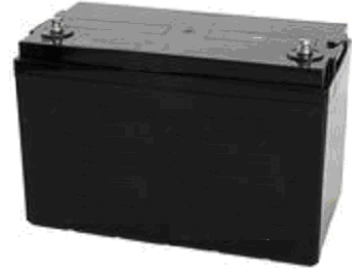


DC Series

Deep Cycle series batteries are designed to have a large amount of stored current discharged between charging sessions, with very heavy non-porous battery plates to withstand repeated major discharging and charging cycle(deep cycle). The Deep-cycle batteries uses a different chemistry for the plates active paste material, and a slightly stronger electrolyte than normal battery electrolyte, which allows for a much longer life in deep cycle applications.

DC121000

(12V100Ah/10hr)

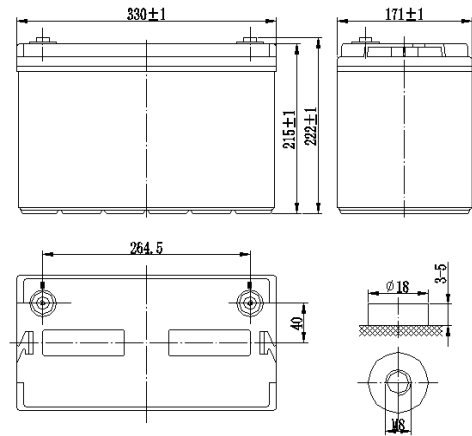


Application

- E-Bike
- Alarm System
- Cable Television
- Power tools
- Emergency Power System
- Security System
- Golf Cars
- Medical Equipment
- Solar and Wind Power System
- Communication Equipment
- Control Equipment
- Toys

General Features

- Sealed and maintenance free operation.
- Non-Spillable construction design.
- ABS containers and covers optional.
- Safety valve installation for explosion proof .
- High quality and high reliability.
- Exceptional deep discharge recovery performance.
- Low self discharge characteristic.
- Flexibility design for multiple install positions.



CONSTRUCTION

Component	Positive plate	Negative plate	Container	Cover	Safety valve	Terminal	Separator	Electrolyte
Raw material	Lead dioxide	Lead	ABS	ABS	Rubber	Copper	Fiberglass	Sulfuric acid

TECHNOLOGY PARAMETER

Battery model	DC121000			
Designed Cycle Life	> 350 Cycles @ -0.5CA to 9.6V			
Capacity (25 °C)	20hR(5.3A, 10.8V)	10hR(10.2A, 10.8V)	5hR(17.3A, 10.5V)	1hR(68.4A, 9.60V)
	106Ah	102Ah	86.5Ah	68.4Ah
Dimensions	Length	Width	Height	Total Height
	330 ±2mm	171 ±2mm	215 ±2mm	222 ±2mm
Approx. weight (±5%)	30.5Kg			
Internal resistance	Full charged at 25°C: Approx. 6mOhms			
Self discharge	3% of capacity declined per month at 25°C (average)			
Capacity Affected by Temp.(20HR)	40 °C	25 °C	0 °C	-15 °C
	102%	100%	85%	65%
Charge Voltage (25°C)	Cycle use		Float use	
	14.4-14.7V(-30mV/°C), max. Current:25.0A		13.5-13.8V(-20mV/°C)	

DC121000- (12V100Ah/10hr)

Constant current discharge ratings-amperes at 25°C

End Point Volts/Cell	5min	10min	15min	30min	1h	3h	5h	10h	20h
1.60V	330	249	190	115	68.4	28.9	18.9	10.8	5.68
1.65V	314	238	181	111	65.9	28.0	18.4	10.6	5.58
1.70V	295	225	171	107	63.4	27.0	17.8	10.4	5.47
1.75V	277	212	162	103	60.9	25.9	17.3	10.3	5.42
1.80V	258	200	153	99.0	58.3	24.7	16.8	10.2	5.30
1.85V	239	189	144	95.0	55.8	23.5	16.3	10.0	5.25

Constant power discharge ratings-watts at 25°C

End Point Volts/Cell	5min	10min	15min	30min	1h	3h	5h	10h	20h
1.60V	591	449	344	209	125	53.2	34.9	20.1	10.6
1.65V	558	427	325	201	120	51.2	33.8	19.6	10.4
1.70V	522	400	307	193	115	49.2	32.6	19.1	10.1
1.75V	487	374	289	184	110	46.8	31.5	18.8	9.97
1.80V	451	353	271	176	104	44.5	30.4	18.6	9.82
1.85V	417	331	253	168	99.4	42.2	29.3	18.1	9.58

