

### DC Series

Deep Cycle series batteries are designed to have a large amount of stored current discharged between charging sessions, with very heavy non-porous battery plates to withstand repeated major discharging and charging cycle(deep cycle). The Deep-cycle batteries uses a different chemistry for the plates active paste material, and a slightly stronger electrolyte than normal battery electrolyte, which allows for a much longer life in deep cycle applications.

**DC12240**

**(12V24Ah/20hr)**

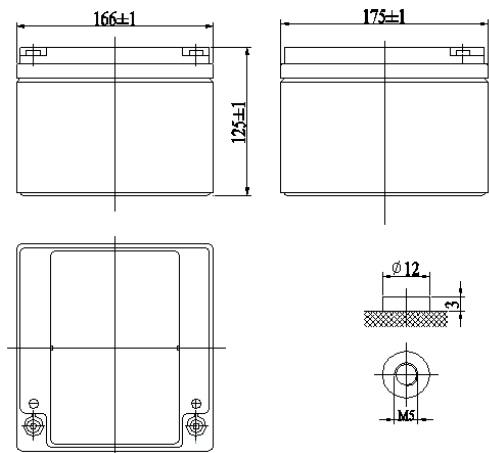


### Application

- Alarm System
- Cable Television
- Power tools
- Medical Equipment
- Solar and Wind Power System
- Communication Equipment

### General Features

- Sealed and maintenance free operation.
- Non-Spillable construction design.
- ABS containers and covers (UL94HB, UL94V-0) optional.
- Safety valve installation for explosion proof .
- High quality and high reliability.
- Exceptional deep discharge recovery performance.
- Low self discharge characteristic.
- Flexibility design for multiple install positions.



### CONSTRUCTION

Component	Positive plate	Negative plate	Container	Cover	Safety valve	Terminal	Separator	Electrolyte
Raw material	Lead dioxide	Lead	ABS	ABS	Rubber	Copper	Fiberglass	Sulfuric acid

### TECHNOLOGY PARAMETER

Battery model	DC12240			
Designed Cycle Life	>350 Cycles @ -0.5CA to 9.6V			
Capacity (25°C)	20hR(1.2A, 10.5V)	10hR(2.32A, 10.5V)	5hR(3.97A, 10.5V)	1hR(15.2A, 9.60V)
	24Ah	23.2Ah	19.85Ah	15.2Ah
Dimensions	Length	Width	Height	Total Height
	175±1mm	166±1mm	125±1mm	125±1mm
Approx. weight (±5%)	8 Kg			
Internal resistance	Full charged at 25°C: Approx. 12mOhms			
Self discharge	3% of capacity declined per month at 25°C (average)			
Capacity Affected by Temp.(20HR)	40 °C	25 °C	0 °C	-15 °C
	102%	100%	85%	65%
Charge Voltage (25°C)	Cycle use		Float use	
	14.4-14.7V(-30mV/°C), max. Current: 6A		13.6-13.8V(-20mV/°C)	

### DC12240- (12V24Ah/20hr)

Constant current discharge ratings-amperes at 25°C

End Point Volts/Cell	5min	10min	15min	30min	1h	3h	5h	10h	20h
1.60V	84.6	59.2	45.1	26.7	15.2	6.63	4.33	2.44	1.26
1.65V	80.4	56.6	42.9	25.7	14.9	6.42	4.21	2.40	1.23
1.70V	75.6	53.4	40.7	24.5	14.5	6.20	4.09	2.35	1.22
1.75V	70.8	50.2	38.5	23.3	13.9	5.94	3.97	2.32	1.20
1.80V	66.1	47.6	36.3	22.2	13.3	5.67	3.85	2.28	1.18

Constant power discharge ratings-watts at 25°C

End Point Volts/Cell	5min	10min	15min	30min	1h	3h	5h	10h	20h
1.60V	156	110	83.9	50.0	28.6	12.5	8.23	4.67	2.42
1.65V	148	104	79.3	47.7	27.9	12.1	7.96	4.56	2.35
1.70V	138	97.7	74.9	45.4	27.1	11.6	7.69	4.45	2.31
1.75V	129	91.4	70.4	42.9	25.8	11.0	7.43	4.37	2.27
1.80V	119	85.7	65.7	40.3	24.3	10.4	7.12	4.24	2.20

